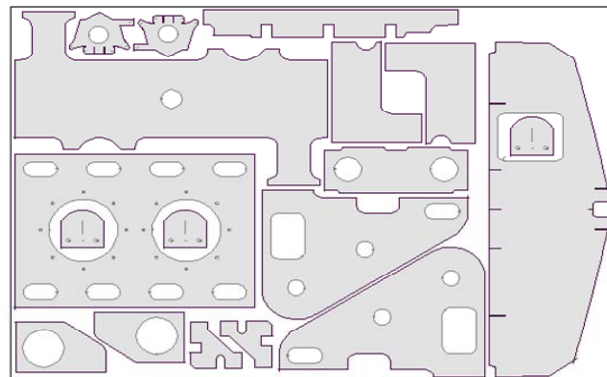




Profile- Master Feature List

- Support for all tooling operations ie. Laser, oxy fuel, plasma, water-jet, marking, drilling, printing
- Interfaces available for a wide range of cutting machines and numeric controllers
- Integral "Opus 4" CAD Package for simple, fast definition of parts to be profiled
- Standard DXF file import & export for interfacing to other CAD systems
- Profiler module for part verification, assigning tooling operations, lead styles, pierce points
- Flexible part storage and retrieval system using Windows Folders easily handles 1000's parts
- Optional Pattern/fitting libraries available e.g square to rounds, cones, segment bends
- Database for definition of material types, plate thickness & dimensions, lead in styles
- Sheet management facility for monitoring stock levels; managing remnant plates, plate history
- Automatic "True Shape" nesting module uses advanced algorithms to produce unparalleled results
- Interactive nesting module for complete control of part placement
- Flexible report generator allows print layouts to be customised
- Ability to accurately cost parts/jobs based on material, area, weight & fabrication time
- Import "DSTV" files from Structural Steel Packages (Xsteel, StruCAD) for rapid plate processing
- Shear Nesting routine for Crop & Shear processing high quantities of rectangular plates



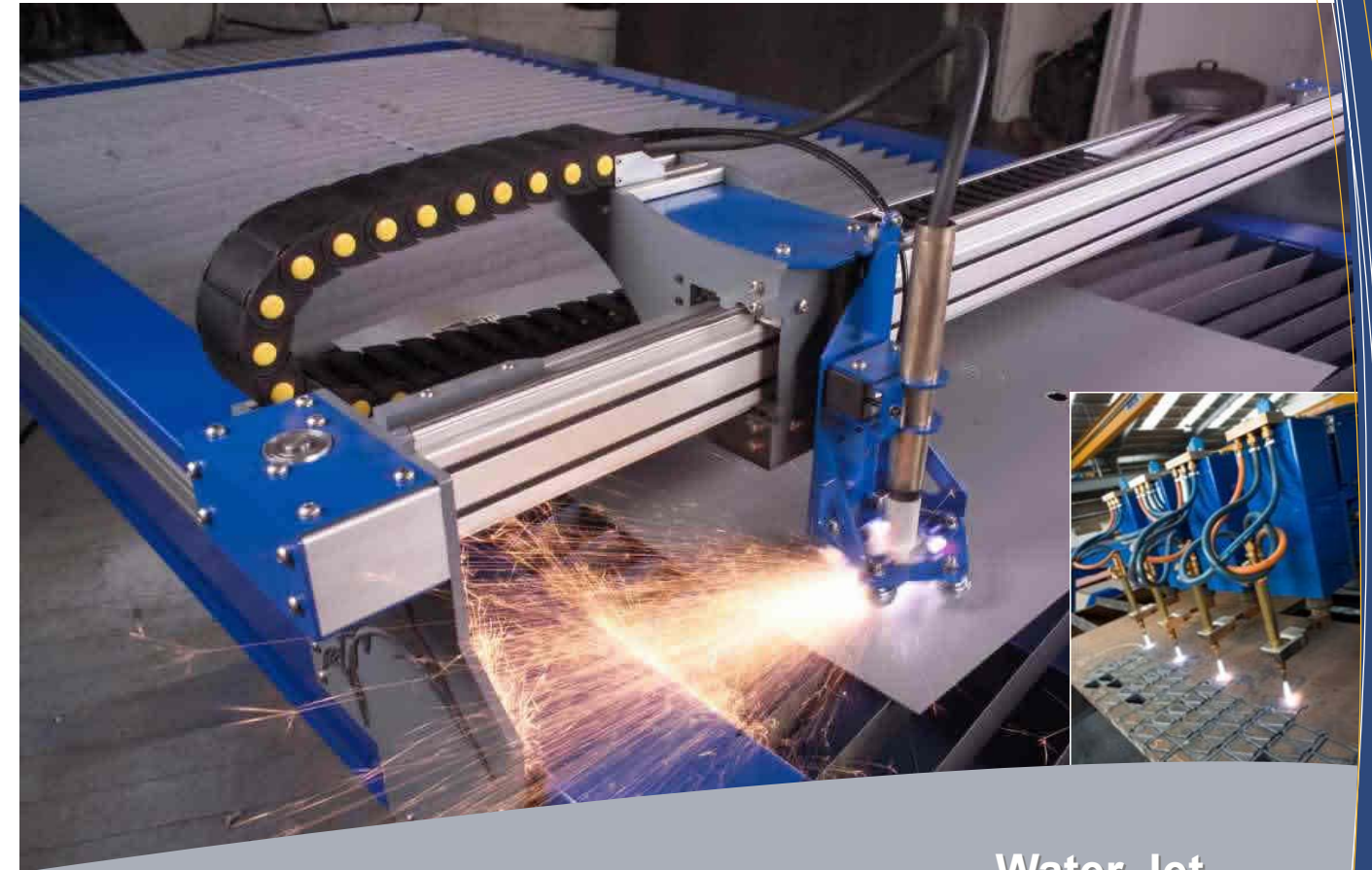
T: +44 (0) 1253 792 112
E: sales@map-software.com
W: www.map-software.com

Metropolitan Business Park, Preston New Road,
Blackpool, Lancashire, United Kingdom FY3 9LT

Profilemaster

Ultimate Profiling Software

Ideal for Sheet Metal to Heavy Plate



The Total solution for :

- Water Jet
- Plasma
- Oxy Fuel
- Laser
- Router
- Drill
- Punch



www.w.map-software.com

Profilemaster

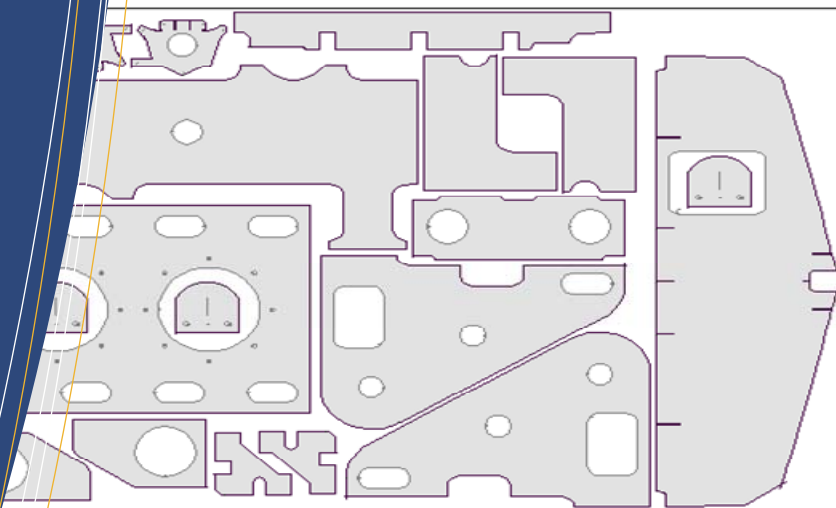
Profile Master is a CAD/CAM application for Windows that incorporates all the features necessary to efficiently control the production of general "profiled" parts. Parts can be created with the integral CAD system, generated from optional pattern templates, or imported from another program. Modular in design, the program is available in a variety of standard configurations to meet specific requirements, all with an easy upgrade path to more advanced features. Utilising many standard Windows' techniques, the program is intuitive and easy to learn whilst offering the flexibility to meet your particular manufacturing needs. From the comprehensive database of material & manufacturing details right through to the most accurate automatic nesting system available, Profile Master ensures efficient part scheduling whilst offering expanded management information to quantify the processes involved.

Total software solution for Profiling sheet metal & heavy plate

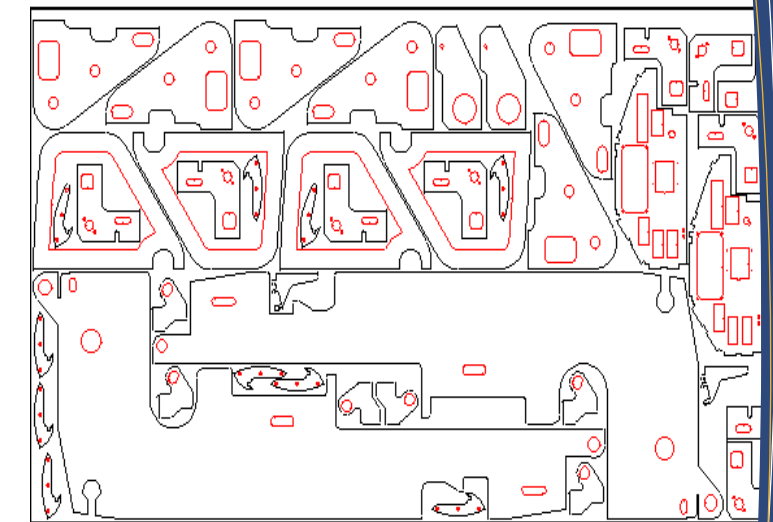
CONTROL THE WHOLE OF THE MANUFACTURING PROCESS FROM ANY OFFICE PC

Structural Steel : (supports DSTV format) :

Import and process 1000+ parts direct from the structural steel design program



- ✓ Material / thickness, part no.s and quantities are auto imported
- ✓ Parts can be nested for both shearing and profile cutting
- ✓ Single Torch or advanced multi-torch nesting
- ✓ The holes can be marked, punched or cut
- ✓ Similar Shapes but with different part no.s are grouped for nesting
- ✓ Extensive management Information





Ship Building

A PROVEN TRACK RECORD WITH WORLDWIDE RECOMMENDATIONS

Profile Master allows the importing of 1000 + parts direct from Naval architects ship design program. Bulkheads for aluminium ships are often marked and cut using routers. Steel ships are usually cut with plasma. Several tooling operations are often required on each part.

Import filters & batch operations

THE USABILITY AND RELIABILITY IS IN THE DETAIL WITH UNDENIABLE CONVENIENCE AT YOUR FINGER TIPS.



The software allows the user to import multiple parts in different file formats automatically for processing.



Multi-torch nesting

- ✓ Auto assigns no. of torches and torch spacing. Then reduces no. of torches as required. Finally fills up any spaces using a single torch

Common Line Cutting

- ✓ Compensates for "Kerf" and applies lead ins. This will save cutting time, increasing productivity and efficiency.



Profile Master Screen Shot

